

**FIRED
EARTH**

by

westex.

FLOORING EXCELLENCE

DERWENT & WHARFE
FLATWEAVES

TECHNICAL DETAILS

FIRED EARTH FLATWEAVES



The Fired Earth Collection presents Derwent & Wharfe. Two versatile flatweaves carpet designs made from 100% premium wool, both available in a palette of contemporary natural shades and suited to a wide range of applications.

Available in 5 widths:

1.00m, 3.66m (12ft), 4.00m, 4.57m (15ft) & 5.00m

Method of Manufacture:

Flatweave

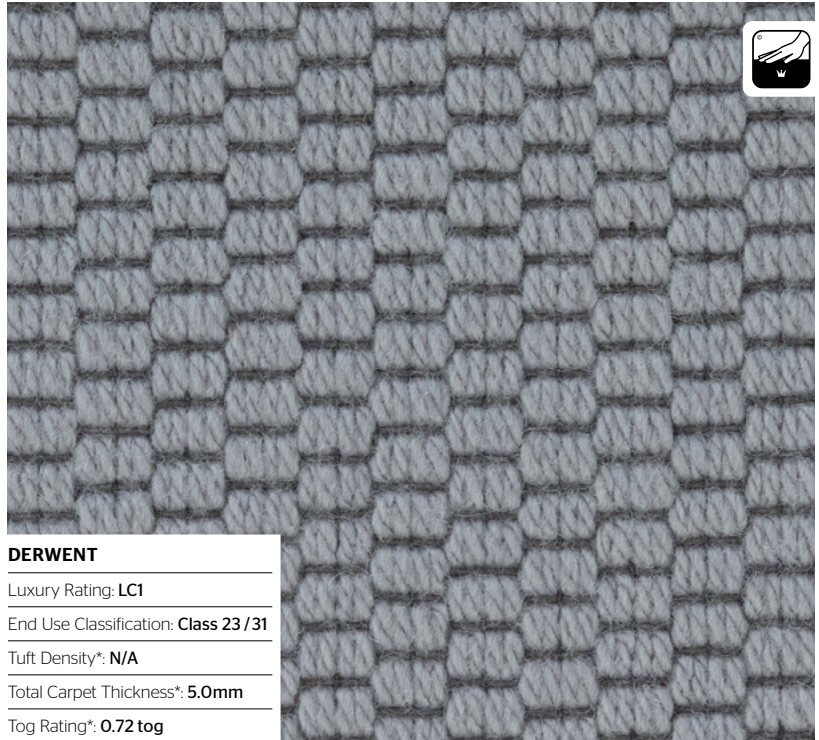
Pile Material:

100% Wool

Colour Palette:

12 Colours

2 DESIGN STYLES



DERWENT

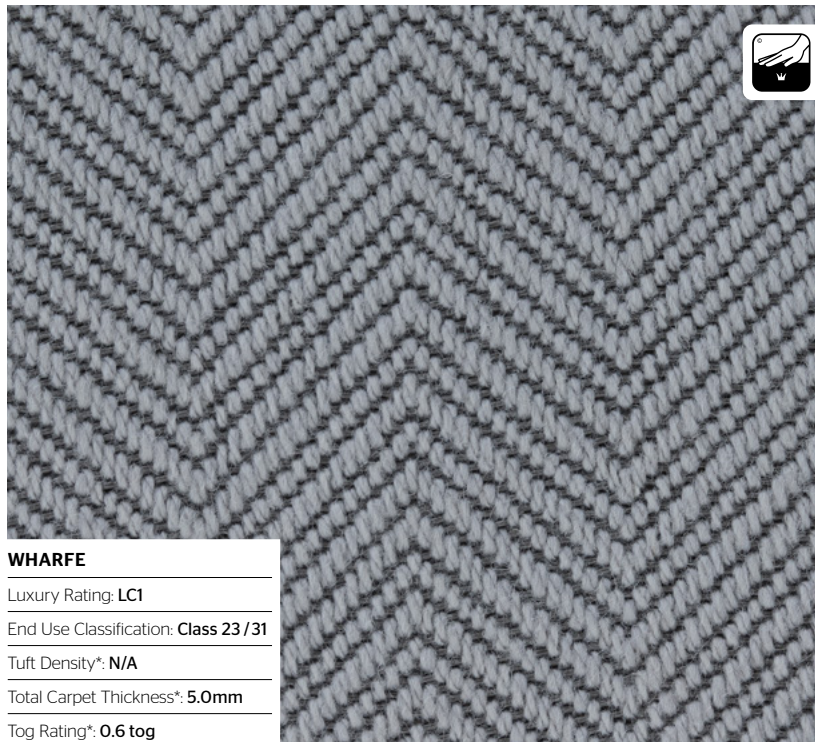
Luxury Rating: **LC1**

End Use Classification: **Class 23 / 31**

Tuft Density*: **N/A**

Total Carpet Thickness*: **5.0mm**

Tog Rating*: **0.72 tog**



WHARFE

Luxury Rating: **LC1**

End Use Classification: **Class 23 / 31**

Tuft Density*: **N/A**

Total Carpet Thickness*: **5.0mm**

Tog Rating*: **0.6 tog**

*+/- 10% commercial tolerance



Westex Carpets Limited.

Calder Bank Mills, Calder Bank Road, Dewsbury WF12 9QW, United Kingdom

Tel: +44 (0)1274 861334

Fax: +44 (0)1274 873266

westexflooring.com

info@westexflooring.com

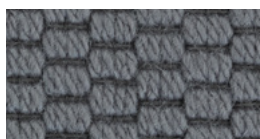
westex.

FLOORING EXCELLENCE

FIRED EARTH FLATWEAVES

DERWENT

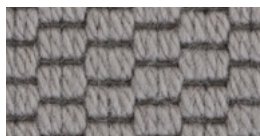
12 COLOUR OPTIONS



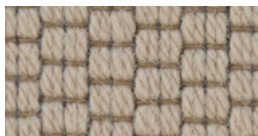
Rowsley



Hathersage



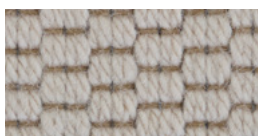
Starkholmes



Curbar



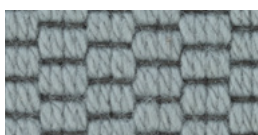
Cromford



Grindleford



Snitterton



Northwood



Matlock



Chatsworth



Baslow



Stanton



Colour: Curbar



Westex Carpets Limited.
Calder Bank Mills, Calder Bank Road, Dewsbury WF12 9QW, United Kingdom
Tel: +44 (0)1274 861334 Fax: +44 (0)1274 873266
westexflooring.com info@westexflooring.com

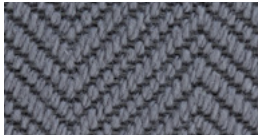
westex.

FLOORING EXCELLENCE

FIRED EARTH FLATWEAVES

WHARFE

12 COLOUR OPTIONS



Ulleskelf



Otley



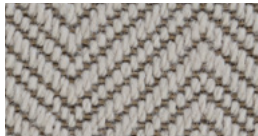
Collingham



Castley



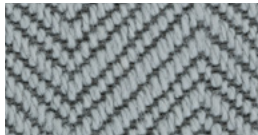
Leathley



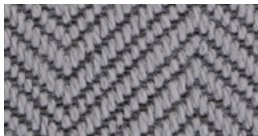
Knotford Lagoon



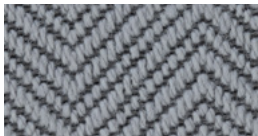
Weatherby



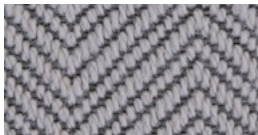
Kirkby Wharf



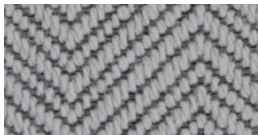
Netherby



Nun Appleton



Ryther



Dukeswick



Colour: Castley


















Westex Carpets Limited.
Calder Bank Mills, Calder Bank Road, Dewsbury WF12 9QW, United Kingdom
Tel: +44 (0)1274 861334 Fax: +44 (0)1274 873266
westexflooring.com info@westexflooring.com

westex.

FLOORING EXCELLENCE

Technical Specification

Luxury Rating	BS EN 1307:2014	LC1	
End Use Classification	BS EN 1307:2014	Class 22 Normal Domestic Use Class 31 Moderate Commercial Use	  
Hexapod 4000	BS EN 1307:2014	4.5	
Hexapod 12000	BS EN 1307:2014	4.5	
Roll Widths*		Available in 5 sizes: • 1.00m • 3.66m (12ft) • 4.00m • 4.57m (15ft) • 5.00m	
Roll Length		Customisable	
Method of Manufacture		Flatweave	
Tuft Density*	ISO 1763	N/A	
Pile Material		100% Wool	
Pile Height above Backing*		3.0mm	
Total Carpet Thickness*		5.0mm	
Primary Backing		Polypropylene	
Flammability	BS4790 Hot Nut Test	Low Radius of Char	
Reaction to Fire	BS EN 13501	Class C _{fl} -s1	
Delamination	BS ISO 11857	Pass Minimum 15.00 (N)	
Thermal resistance	BS4745	0.72 tog	
Dimensional Stability	ISO 2551-1981 (2010)	Pass Pass if shrinkage is equal to or less than 1.2% and extension less than or equal to 0.5%	
Colour Fastness: Light Colour Fastness: Shampooing Colour Fastness: Rubbing	BS EN ISO -B02 BS ISO -18168 BS EN ISO -X12	6 5 5	
Electrical Resistance	ISO 10965:2011	Pass Does not exceed 10Ω	
Sound Absorption			
Underfloor heating system		No. 3 In accordance with heating manufactures recommendations	
Warranty		6 Years	
IMO Certified	IMO FTP Code 2010 Part 2 & Part 5	Not Available	
UKCA Mark	EN 14041		















*Commercial Tolerance +/- 10%



Westex Carpets Limited.
Calder Bank Mills, Calder Bank Road, Dewsbury WF12 9QW, United Kingdom
Tel: +44 (0)1274 861334 Fax: +44 (0)1274 873266
westexflooring.com info@westexflooring.com

westex.
FLOORING EXCELLENCE

Technical Specification

Luxury Rating	BS EN 1307:2014	LC1	
End Use Classification	BS EN 1307:2014	Class 23 Heavy Domestic Use Class 31 Moderate Commercial Use	 
Hexapod 4000	BS EN 1307:2014	4.5	
Hexapod 12000	BS EN 1307:2014	4.5	
Roll Widths*		Available in 5 sizes: • 1.00m • 3.66m (12ft) • 4.00m • 4.57m (15ft) • 5.00m	
Roll Length		Customisable	
Method of Manufacture		Flatweave	
Tuft Density*	ISO 1763	N/A	
Pile Material		100% Wool	
Pile Height above Backing*		3.0mm	
Total Carpet Thickness*		5.0mm	
Primary Backing		Polypropylene	
Flammability	BS4790 Hot Nut Test	Low Radius of Char	
Reaction to Fire	BS EN 13501	Class Dfl-s1	
Delamination	BS ISO 11857	Pass Minimum 15.00 (N)	
Thermal resistance	BS4745	0.72 tog	
Dimensional Stability	ISO 2551-1981 (2010)	Pass Pass if shrinkage is equal to or less than 1.2% and extension less than or equal to 0.5%	
Colour Fastness: Light Colour Fastness: Shampooing Colour Fastness: Rubbing	BS EN ISO -B02 BS ISO -18168 BS EN ISO -X12	6 5 5	
Electrical Resistance	ISO 10965:2011	Pass Does not exceed 10Ω	
Sound Absorption			
Underfloor heating system		No. 3 In accordance with heating manufactures recommendations	
Warranty		6 Years	
IMO Certified	IMO FTP Code 2010 Part 2 & Part 5	Not Available	
UKCA Mark	EN 14041		

*Commercial Tolerance +/- 10%



Westex Carpets Limited.
Calder Bank Mills, Calder Bank Road, Dewsbury WF12 9QW, United Kingdom
Tel: +44 (0)1274 861334 Fax: +44 (0)1274 873266
westexflooring.com info@westexflooring.com

westex.
FLOORING EXCELLENCE



Westex Carpets Limited.
Calder Bank Mills, Calder Bank Road, Dewsbury WF12 9QW, United Kingdom
Tel: +44 (0)1274 861334 Fax: +44 (0)1274 873266
westexflooring.com info@westexflooring.com

westex.
FLOORING EXCELLENCE